



SALINA FAMILY
HEALTHCARE CENTER



SMOKY HILL
FAMILY MEDICINE RESIDENCY



2022 ANNUAL REPORT

Mission

... to serve our community at the crossroads of compassionate healthcare and professional education.

Vision

- Providing the most comprehensive, integrated primary care services when among other community health centers in Kansas
- Being identified as a National Leader in Quality by HRSA
- Fostering and expanding training opportunities for health professionals
- Being the residency program of choice for physicians who desire to practice in rural Kansas
- Increasing access to core health care services within the Salina region
- Being the employer of choice in the community

Values

Excellence, Innovation, Access, Teamwork, Social Justice, Education, Ethics & Integrity, Patient-Centered

MEET THE BOARD

Robin Cates – President

Owner, On the Pot

Ramona Malone - VP

Secretary, New Jerusalem
Missionary Baptist Church

Angie Coble – Past President/ Secretary

Judge, Kansas Court of Appeals

Jordan Webb– Treasurer

Financial Planner, Pathway
Financial

Andy Adams

Senior VP, Bennington State
Bank

Rafael Mendez

Sales Executive, Blue Beacon

Michelle Nosker

Chemist, REPCO

Sara Nelson

Owner, Merry Maids of Salina

John Redding

Chief Lending Officer, The
Mortgage Company

Vonzetta Rhodeman

Warehouse, UPS

Lynn Wuthnow, DDS

Dentist/Owner, Fine Art of Family
Dentistry



A Message from the CEO

Hello and thank you to all SHEF supporters! Welcome to the SHEF CEO's year in review. The last year has been eventful (like they all are). Thankfully, it feels like the COVID-19 pandemic has started to lose its grip on everything we do. That said, we have pushed past 7,300 COVID tests completed & an amazing 33,000 COVID vaccines administered! As a result, SHEF has been recognized with a HRSA COVID Vaccinator Badge.

We continue to see expansion of our services with particular growth noted in our Quality Department, Community Outreach, and our newly opened Eye Care Center. Dental outreach has placed over 1400 sealants – a 50% increase over pre-pandemic years. The pharmacy continues to provide medications to our patients, many of whom would simply not be able to afford them otherwise. To help manage the societal burden of the opioid crisis, we now have a medication-assisted treatment program currently serving about 30 area patients. SHEF has assumed a greater role in HIV and Hepatitis C care for Saline County. And the ongoing burden of diabetes informed our progress in becoming a Certified Diabetes Self-Management Education Program. Patient care stands at the center of all we do with our ongoing NCQA Patient-Centered Medical Home Recognition.

Our mission – to serve our community at the crossroads of compassionate healthcare and professional education – continues to be our guiding principle and our special place in the community health center world. Five more fine family physicians are graduating to serve rural Kansas or community health center populations. In 2021, we had contact with our 15 family medicine residents and 81 students in disciplines as varied as medicine, pharmacy, dentistry, nursing, and healthcare administration. While educating the next generation of healthcare professionals, we cared for 10,763 patients in 2021, over 65% of them below 200% of the federal poverty line.

Our Board has been a vital part of the governance over our operations, and we have taken steps to update & modernize our relationship with our Board. In 2021 a sub-committee of the Board did an admirable job updating our Bylaws, providing solid operating guidance for the conduct of Board business. The Board also helped create a recognition program for Board & Finance Committee members completing their service for the organization.

In addition to a great Board, we are blessed with a core of dedicated and professional employees who care deeply about our community. We launched an employee recognition platform called Kazoo which is like an internal Facebook for positive kudos and recognition. We underwent a significant wage reform effort in 2021 to set our minimum wage at \$15 per hour and increase overall salaries by an average of 6%. We revamped our financial bonus program to recognize purpose-driven outcomes, patient satisfaction, and tenure.

We have also expanded our collaborative work with area agencies. Early in the pandemic, we formed a Saline County COVID Collaboration with the Saline County Health Department and Salina Regional Health Center to coordinate & maximize community education, testing, & vaccination. This collaboration is a vital step to expanding future primary care-public health projects the County. SHEF has also participated in a statewide grant, the Delta Project, a collaboration between community health centers, community mental health centers, & county health departments to increase integration between mental & physical health care. Work through our KS FQHC-only accountable care organization, Aledade, has enhanced care quality and decreased cost of care for patients of major payors. In one last example, we have worked with our local addiction treatment agency, Central Kansas Foundation, on the placement of Peer Support in-house to enhance services for those struggling with addiction.

When I recently asked our Supervisors how they would describe our experience with COVID, the overwhelming message was that we survived. And while I agree with them, I think we have done much more than that. We have emerged as a more resilient group – battled-tested and ready to be there for our community in the post-COVID world, whatever that looks like.

SHEF BY THE NUMBERS



10,763

Unique patients seen



40,677

Total Patient Visits



7,716

Total Dental Patient Visits



68,169

Immunizations Given
(Including COVID-19)



48,120

Prescriptions Filled



48,388

Labs Ran



81

Students hosted



39

Healthcare providers



80%

Employee Retention Rate



8,760

Hours spent on inpatient care



131

Outreach events - with 65 organizations!



10,290

Dental outreach screenings

SUCCESS METRICS



>95%

of patients would recommend SFHC to their friends or family



96%

of SHEF employees are fully vaccinated against COVID-19



67%

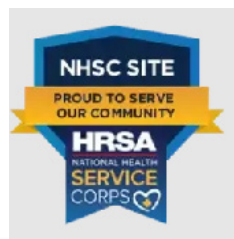
of patients with hypertension had blood pressure controlled or less than 140/90. The National average is 55%



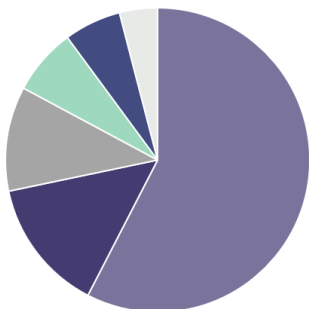
94%

of patients >18 who were screened for tobacco use received cessation counseling

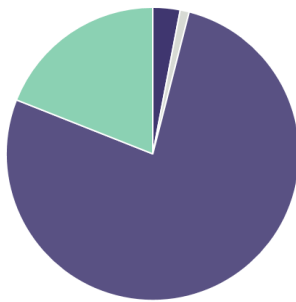
QUALITY AWARDS



THE FINANCIALS



Revenue Sources



Operating & Expenses

Financial Successes

- Started a scholarship program
- Increased staff minimum wage
- Opened the Eye Care Center
- Renovated IT/Maintenance's workspaces
- Purchased 13 new dental chairs and 21 new medical exam tables

Other Stats FY22

Current Ratio (Current Assets/Current Liabilities): 192.48

Days Cash on Hand: 94

EXECUTIVE TEAM

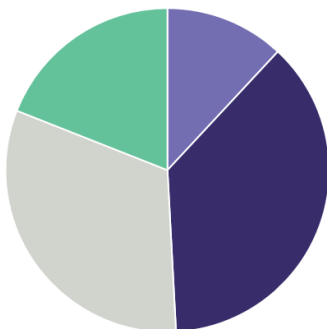
Robert Kraft, MD, CEO/CMO

Deb Demel, Chief Financial Officer

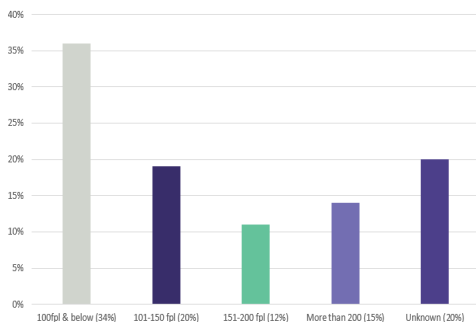
Ann Feil, Chief Operations Officer

Kimberly Williams, MD, Program Director

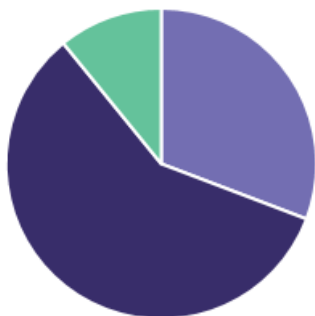
OUR PATIENTS



2021 Patients by Insurance Type



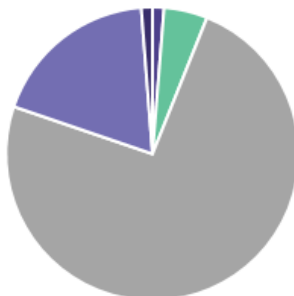
2021 Patients by Income Status



2021 Patients by Age Group



2021 by Patient's Location



■ Asian ■ Black/African American ■ White ■ Chose not to report ■ Other

2021 Patients by Race

OUR PEOPLE

Medical Providers

Joshua Bahr, MD
Molly Biggs, PA-C
Dustin Bonzo, MD
Dakota Bunch, MD
Danielle Corbett, MD
Allison Edwards, PA-C
Whitney Gantz, APRN-C
Abby Hanzlicek, MD
Alex Hermes, MD
Maci Hicks, MD

Kevin Klug, MD
Robert Kraft, MD
Marija Lawless, MD
Andrew Lopata, PA-C
Casey McNeil, MD
Seth Metzler, PA-C
Rob Nagely, MD
Caitlyn Nguyen, MD
Leah Peterson, MD
Brandon Reid, MD

Amanda Rhyne, MD
Martha Riese, MD
Abbey Rupe, MD
Philip Sedo, MD
Tyler Shriver, DO
Matthew Tilton, DO
Kimberly Williams, MD
Michael Ziegler, MD

Dental Providers

Charles Abbick, DDS
Shelly Bushnell, RDH

Megan Honas, RDH
Alyse Lambert, RDH

Michelle Nunes, DDS
Haley Sherwood, RDH

Behavioral Health Providers

Kate Behan, LMSW/T
Danielle Blea, LCMFT, LCAC
Sam Coup, LCPC, LAC

Kate Nesbitt, APRN, PMHNP-PC
Erika Warbinton, PhD

Pharmacists

Alex Engelland, PharmD
Tabia Norris, PharmD

Derek Pihl, PharmD
Cassie Shields, PharmD

Mallory Zweygardt,
PharmD

Optometrists

Monte Wentz, OD

COVID-19 RESPONSE



I got vaccinated to protect my family – especially my new grandbabies!

This message made possible by the Salina Regional Health Foundation

VaccineFinder.org

Heather P.

SALINE COUNTY VACCINATION COLLABORATION

COVID-19 VACCINE @ HOME

Consented to receiving a vaccine from the comfort of your home?

Contact Kathy Meek at Whelan Coordinator at PHC 781-225-1111. Or, if you have medical questions, contact Salina Health Foundation Center a COVID-19 Project Manager at PHC 781-225-1111.

Let's protect the community from the spread of COVID-19

Vắc xin Covid-19

Thư này, ngày 13 tháng 5, 12 giờ - 6 giờ.

Tại đây cũng có các dịch vụ sau:

#1



Vaxx




Por qué ofrecer vacunas contra el covid-19 en el trabajo?

1. Puede recibir créditos fiscales para compensar el costo de la ausencia pagada para que los empleados se vacunen y se recuperen de las secuelas.
2. La vacunación protege a sus clientes y empleados: al reducir la necesidad de tiempo fuera del trabajo para la cuarentena, mejorar asistencia al trabajo y mantenimiento la seguridad.
3. Aumenta la capacidad de tener reuniones en persona y potencialmente reduce la necesidad de usar las máscaras.

Para ser anfitrión, complete la encuesta: <http://bit.ly/COVID19salina>

La colaboración de vacunación del condado de Saline coordinará un tiempo para llegar a su lugar de trabajo para vacunar empleados interesados

Salina Regional Health Center's Occupation Health Partners at (785) 823-8381



J&J COVID-19 VACCINES

SATURDAY JUNE 19
4:00 - 6:15 pm

Available prior to the Salina Liberty game
@Southwest TPEC Parking Lot
Johnson & Johnson vaccine

Those who receive will get a coffee & a snack to take to the game. All are welcome to attend. Salina Regional Health Center's Occupation Health Partners at (785) 823-8381

FREE
- Saliva Based -
COVID-19 Test Kits

What you need to know:

1. You will need a collection that accepts test managers to get results.
2. Follow the included instructions and steps the completed test for your personal profile.
3. You may take multiple test kits for your family.
4. Or do your kit in the future.

For more information, contact Salina Regional Health Center at (785) 823-8381 or info@salinhealth.org

COVID-19 VAX @ SATC

Pfizer | J&J

10a-2p
9/17 (2nd doses)

Students & Staff

2562 Centennial, Building C, Room C148

Door Dash gift cards for students as supplies last



Free Saliva-Based COVID-19 Testing



Why does testing still matter?

- It's tricky to know if its seasonal allergies or COVID-19. Getting tested gives you an answer, so that you know what to do.
- Testing is important for infection control - even if you don't have symptoms.
- Testing can track the effectiveness of vaccination. Even though vaccines are highly effective a very small portion of people may get infected.
- It is important to protect the people around you. Feel free to take a test for your family or friends.

Get tested if you have any COVID-19 symptoms, have been in close contact with someone who tested positive, if you've been engaging in high risk activities, if you are planning to travel or have just gotten back, or just if you want to!

JUNE

Web & COVID-19 resources by the Saline County Healthcare Collaborators

For updates on daily locations and Saline County Healthcare Collaborators

Fri 6/4, 11:15-11:30am Senior Center | 145 N 4th St, Salina

Thurs 6/10, 9:00-10:00am | Ace Hardware Parking Lot | 309 S Broadway Blvd, Salina

Fri 6/11, 11:00-1:00pm | Photo Track Shop | 1225 N 4th St, Salina

Tues 6/15, 6:00-8:00pm | Speedy Wash Laundromat | 214 E. 10th Ave, Salina

Fri 6/18, 2:00-6:00pm | St. Francis Ministries Gymnasium | 110 W. Otis Ave, Salina

Sat 6/19, 4:00-6:15pm | Tony's Pizza Event Center - Liberty game | 100 The Midway, Salina

Mon 6/21, 2:00-4:45 pm | Pool Beach | 195 S Chicago, Salina

Sat 6/26, 10:00-12:30pm | Outreach with New Jerusalem Baptist | Local morris

Tues 6/29, 1:00-2:45pm | Pool Beach | 195 S Chicago, Salina

COVID-19 Vaccinations

Gypsum

10/17 & 11/7

12P - 3P

City Auditorium

624 Maple

Assaria

10/17 & 11/7

2:15P - 3:15P

City Building

315 E. Main St.

Brookville

10/17 & 11/7

4:15P - 5:15P

City Hall

304 N. Perry

Please 1st and 2nd dose given on alternate dates. Third dose of Pfizer and Moderna will be available for immunocompromised individuals. Start bring in documentation of vaccination and previous doses of COVID-19 mRNA vaccine for 3rd dose. If Johnson & Johnson is available, we will bring to those events. Call after 10:00 if interested in a booster vaccine.

Questions? Contact the Outreach Team at 785-825-7251 Fax 126.

Hosted by the Saline County Vaccination Collaborators



Get Vaccinated

J&J and Pfizer Available

9/24th @ 11a-1p
College Center Conference Room
2310 Centennial Road, Salina KS 67401

No appointment necessary

Vaccines are of no cost to you

*and doses on 10/15 @ 11a-1p, same location

Saline County Healthcare Collaborators
800-825-7251



COVID-19 TESTING

Thursday, Sept. 16, 12-2pm
@ JCPenney's Parking Lot

Thursday, Sept. 23, 4-6p
@ Ace Hardware Parking Lot

Saturday, Sept. 25, 12-2p
@ Smoky Hill Museum St. Fair

All COVID-19 testing kits are no-cost, saliva-based, PCR tests. Kits are designed to be taken at home. Nurses will be on site for those who prefer assistance. Instructions and a prepaid FedEx label are included in the kit. Results will be sent to your phone within 24-48 hours.

Questions? Call 785-825-7251 ext. 526.
Learn more about ALL of Saline County's testing options at vaccinatesalinecountys.com.



QUIEN

Todos los trabajadores del sitio de construcción

QUE

Vacunas Pfizer, Moderna y Johnson & Johnson. dispone 2^a, 3^a dosis o dosis de refuerzo. No se requiere identificación ni seguro médico. Las vacunas no tienen ningún costo para usted

CUANDO

viernes 29/10 (primera dosis de Pfizer) y 19/11 (segunda dosis de Pfizer) 1pm-4pm

DONDE

Burns - McDonnell (Sitio de construcción de Schuans)



¿Preguntas? Llame al 785-825-7251 ext 256 o pregunte por el Departamento de Extensión. (Outreach Department)



FREE COMMUNITY COVID-19 TESTING

Sunday, December 13, 1-5pm
@ Bill Burke Park

What to know:

- It's Free
- It's Saline, not nasal
- Bring a smartphone with internet
- It's self-service, but help will be available
- One test per person, no supplies left
- Follow directional signs to receive your test

¹⁰⁰Do not eat, drink, chew gum, brush teeth, or smoke 30 minutes before taking your test.¹⁰⁰

¹⁰¹This test has been FDA cleared for approval. This test has been authorized by FDA under an EUA for use by Clinical Diagnostic Laboratories. See <https://www.fda.gov/medical-devices/emergency-uses-authorizations> for more information. ¹⁰²This test has been authorized only for the detection of SARS-CoV-2 RNA by any other means or pathways, and this test is only authorized for the duration of the authorization that circumstances may justify. ¹⁰³The authorization of emergency use of this device depends on the device being designed, developed, and tested under conditions of the Federal Food, Drug and Cosmetic Act, as amended, 21 CFR 312.63(b)(1)-(3), unless the device has been shown to be effective in restricted cases.



salinehealth.org | 785-825-7251 | @salinehealth

FREE COVID-19 VACCINES

Thursday, June 10th

9:00A - 1:00P

Ace Hardware Parking Lot
309 S. Broadway Blvd.

Walk up and Drive up appointments available. Johnson & Johnson, Pfizer, and Moderna vaccines available.

Friday, June 18th

2:00P - 6:00P

St. Francis Ministries Gym
110 W. Otis Ave

Walk up/Drive thru appointments and Testing available. Johnson & Johnson, Pfizer, and Moderna vaccines available.



Get your COVID-19 vaccine at home!

Call 785-825-7251 to learn more.

SHEF IN PHOTOS





651 E. PRESCOTT RD, SALINA, KS 67401 | SalinaHealth.org



SALINA FAMILY
HEALTHCARE CENTER

Main Office

785-825-7251

Dental

785-826-9017

Pharmacy

785-452-3900

Medical

785-825-7251

Eye Care

785-823-3937